

# The Rookery

## Whiteley, Hampshire

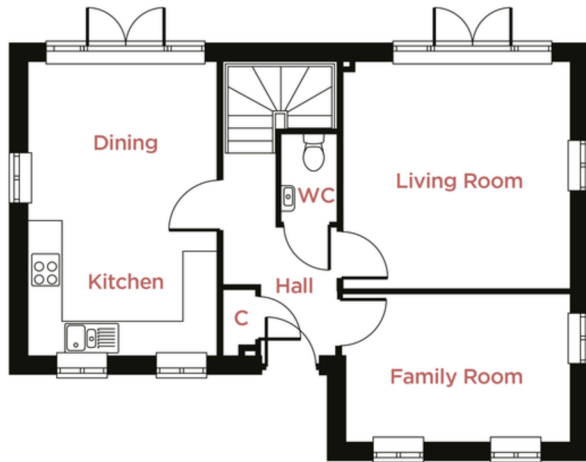
### Plot 8, The Redwing - £535,000

4 bedrooms | 2 bathrooms | 1,261 sq ft



#### Specifications

- Fully fitted kitchen/dining room
- 2 x reception rooms
- Driveway & detached garage
- En suite to master bedroom
- Integrated dishwasher and microwave
- Downstairs cloakroom
- 10 year NHBC warranty



#### GROUND FLOOR

##### Living Room

4135mm x 4123mm 13'7" x 13'6"

##### Family Room

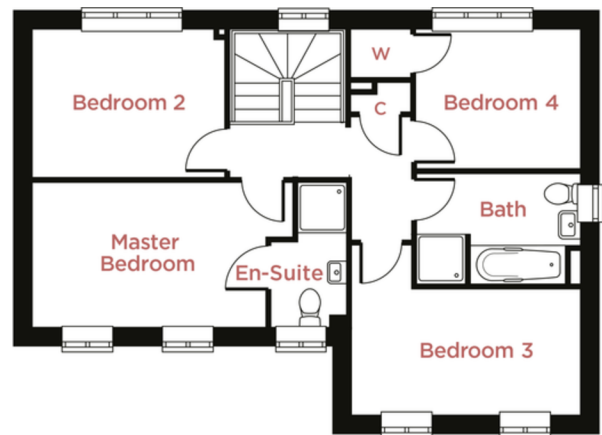
4123mm x 2730mm 13'6" x 8'11"

##### Kitchen/Dining Room

5360mm x 3434mm 17'7" x 11'3"

##### Garage (Selected Plots)

5858mm x 2795mm 19'3" x 9'2"



#### FIRST FLOOR

##### Master Bedroom

4210mm x 2612mm 13'10" x 8'7"

##### Bedroom 2

3471mm x 2678mm 11'5" x 8'9"

##### Bedroom 3

4123mm x 2276mm 13'6" x 7'6"

##### Bedroom 4

2971mm x 2516mm 9'9" x 8'3"

##### Bathroom

2971mm x 2004mm 9'9" x 6'7"

*All imagery, floor plans, and dimensions are approximate and indicative only.  
Each layout and sizes may vary. Each plan may be at a different scale to the others within this brochure.*