

# Maddoxford Gardens

Boorley Green, Hampshire

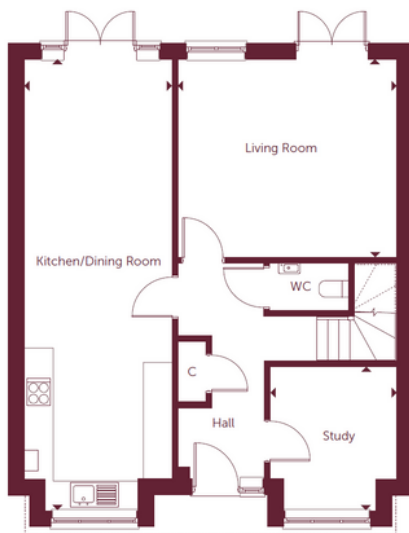
## Plot 2, The Chaffinch - £580,000

4 bedrooms | 3 bathrooms | 1,484 sq ft



### Specifications

- Fully fitted kitchen/dining area
- En suite to master bedroom and Bedroom 2
- 2 x reception rooms
- Off road parking and garage
- Downstairs cloakroom
- Integrated dishwasher and microwave
- 10 year LABC warranty



### GROUND FLOOR

#### Living Room

4610mm x 4211mm 15' 1" x 13' 10"

#### Study

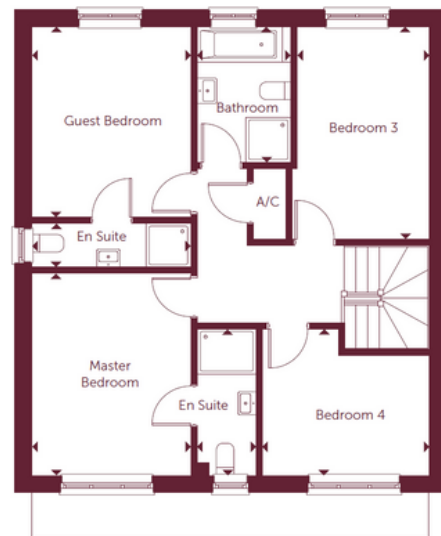
2395mm x 2705mm 7' 10" x 8' 10"

#### Kitchen/Dining Room

8835mm x 3113mm 29' 0" x 10' 3"

#### Garage

5990mm x 4758mm 19' 8" x 15' 7"



### FIRST FLOOR

#### Master Bedroom

4013mm x 3161mm 13' 2" x 10' 4"

#### Guest Bedroom

3773mm x 3161mm 12' 10" x 10' 4"

#### Bedroom 3

4211mm x 2637mm 13' 10" x 8' 8"

#### Bedroom 4

2915mm x 3312mm 9' 7" x 10' 10"

#### Bathroom

2706mm x 1885mm 8' 11" x 6' 2"

*All imagery, floor plans, and dimensions are approximate and indicative only. \*\*Windows in Plot 24 only. Each layout and sizes may vary. Each plan may be at a different scale to the others within this brochure.*